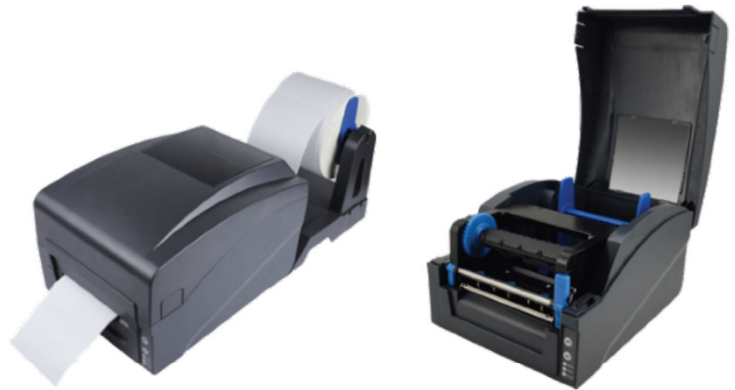


GP-1224T

Barcode Printer

Simple and Easy To Use

GP printer is designed as barcode label printer. It is simple, easy to configure and supports all Windows OS and standard equipped with USB, RS232 and LPT ports. It features printing speed up to 150mm/sec, perfect to use in retail, office or others SME industry environments.



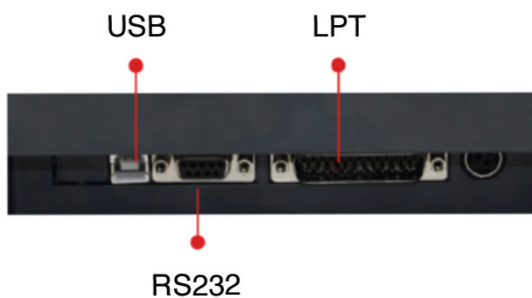
GP-1224T

Specification

| | |
|-----------------------|---|
| Print Method | Direct Thermal and Thermal Transfer |
| Print Width | Max. 104mm (4.09") |
| Print Speed | Max. 152mm/sec, 6 IPS |
| Print Length | Max. 2286mm (90") |
| Resolution | 203 DPI |
| Interface | USB + RS232 + LPT |
| Media | Roll-free, die-cut, continuous, fan-fold, tags, tickets in plain or thermal paper. Width : Max. 120mm (4.72"), Min. 20mm (0.8"), included liner Thickness : 0.06~0.254mm, included liner Supply roll core size : Max. 38mm, Min. 25.4mm (1") Min. gap : 2mm |
| Ribbon | Material : Wax, Wax Resin or Resin Width : Max. 110mm, Min. 30mm Ribbon roll diameter : Max.OD 67mm Ribbon roll core size : 25.4mm (1") |
| Operating Temperature | 5°C to 45°C (operating); -10°C to 50°C (storage) |

Power and Dimensions

| | |
|-------------|-----------------------------------|
| Power Input | DC 24V/2.5A |
| Dimensions | 285mm (W) x 210mm (D) x 180mm (H) |
| Weight | 209kg |



[Notice] : Specification are subject to change without notice

*The instructions are all under the laboratorial measurements with specified paper.